

ENSIGN[®]

Power Pedestals

ENSIGN 5



Configuration Sheet

Power Outlets

Up to 5 Receptacles and Covers

Breakers

Up to 6 Square D QOU Breakers or QO
GFCI Breakers

Top/Lighting

Angled SS Removable Top with LED Light
and photocell (Lens choices:
frosted/yellow/orange) - OR- Flat Top with
no Light

Distribution Block

3 pole (up to 350 mcm mains) - OR - 4 pole
(up to 350 mcm mains | 3 phase)

Grounding

Seperate looping ground lug

Cord Management

Up to 2 Electropolished Stainless Steel
Hangers

Water

Up to 2 Water Spigots with 1/4 turn ball
valves

Metering

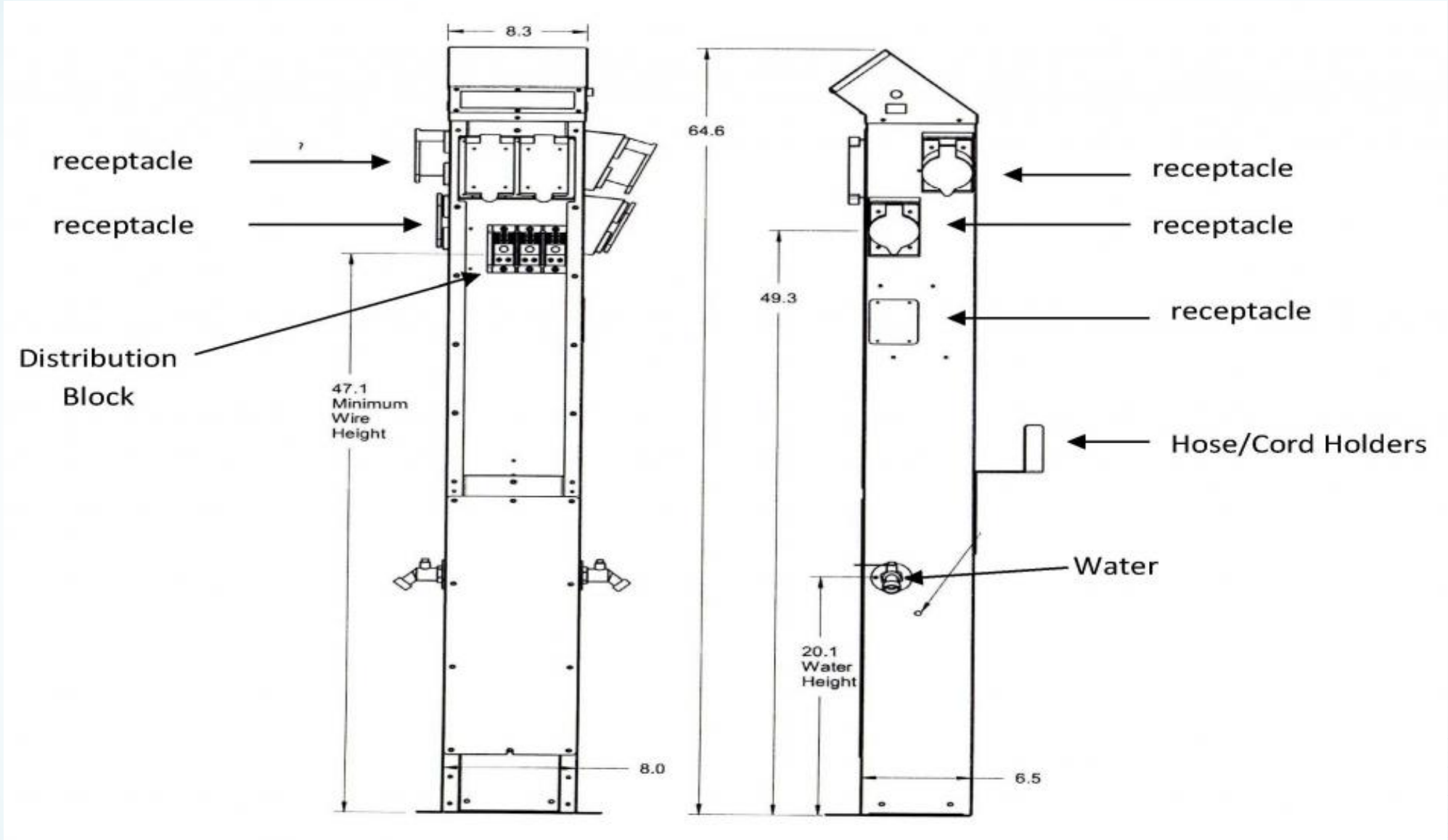
Can be metered with separate counters
for each side/slip, Wireless Available

Mounting

Modular Stainless Steel Feet with ON
dock mounting

UL Listed

ENSIGN 5 DIMENSIONS



Manufacturers Representative:
A.J. Kreuzkamp Associates, Inc.
Email: Sales@AJKreuzkamp.com
Tel: (203) 415-5623